



DX480/520LCA-HD (HEAVY DUTY)

Engine Power : (SAE J1349) 238 kW (318 HP) at 2,000 rpm / 238 kW (318 HP) at 2,000 rpm

Operational Weight : 48,400 - 50,200 kg / 51,100 - 52,900 kg

Bucket capacity(SAE) : 1.8 - 2.86 m³ / 0.92 -3.28 m³



Technical specifications

Engine

Model
DOOSAN DE12TIS
4-Cycle Air-To-Air Intercooler In-line
Water-Cooled, Direct Injection, Tier I/Tier II

No. of cylinders
6

Rated horse power
238 kW (323 PS) at 2,000 rpm (DIN 6271)
238 kW (318 HP) at 2,000 rpm (SAE J1349)

Max. torque
139 kgf/m (1363 Nm) at 1300 rpm

Idle (low - high)
1000 [+/-25] - 2250 [+/-50] rpm

Piston displacement
11051 cm³

Bore x stroke
123 mm x 155 mm

Starter
24 V / 6.6 kW

Batteries
2 x 12 V / 150 Ah

Air filter
Double element and pre-filtered Turbo with auto dust evacuation.

Undercarriage

Very robust construction of all chassis elements. All welded structures designed to limit stresses. High-quality, durable materials. Lateral chassis welded and rigidly attached to undercarriage. Track rollers lubricated for life. Idlers and sprockets fitted with floating seals. Track shoes made of induction-hardened alloy with triple grouser. Heat-treated connecting pins. Hydraulic track adjuster with shock-absorbing tension mechanism.

NUMBER OF ROLLERS AND TRACK SHOES PER SIDE

Upper rollers (standard shoe) 1 (ø180 mm) + 2 (ø200 mm)
Lower rollers: 9 (ø200 mm)
Track shoes and links: 53
Overall track length: 5,465 mm

Hydraulic System

The brain of the excavator is the e-EPOS (Electronic Power Optimizing System). It allows the efficiency of the hydraulic system to be optimised for all working conditions and minimises fuel consumption. The e-EPOS is connected to the engine's electronic control unit (ECU) via a data transfer link to harmonise the operation of the engine and hydraulics.

- The hydraulic system enables independent or combined operations
- Two travel speeds offer either increased torque or high speed
- Cross-sensing pump system for fuel savings
- Auto deceleration system
- Three operating modes, three power modes
- Button control of flow in auxiliary hydraulic circuits
- Computer-aided pump flow control

Main pumps
Parallel, Bent-axis, Piston
Max. flow: 2 x 360 l/min
Displacement: 186 cc/rev.
Weight: 195 kg

Pilot pump
Gear pump
Max. flow: 27.4 l/min
Displacement: 11.0 cc/rev.
Relief valve pressure: 40 kgf/cm²

Maximum system pressure
Implement (boom/arm/bucket):
Work, travel 320 kg/cm² [+10~0]
Rotation 300 kg/cm²
Power 350 kg/cm² [+10~0]

Hydraulic cylinders

Piston rods and cylinder bodies of high-strength steel. Shock-absorbing mechanism fitted in all cylinders for shock-free operation and extended piston life.

	Cylinders	Quantity	Bore x rod diameter x stroke (mm)
Boom		2	170 x 115 x 1,610
Arm		1	190 x 130 x 1,980
Bucket		1	170 x 115 x 1,341
Bucket (8 m arm)		1	120 x 80 x 1,060
Arm (6.3 m boom)		1	190 x 130 x 1,805

Fluid capacities

Fuel tank
620 l

Cooling system (radiator capacity)
29.5 l

Engine oil
28 l

Travel device
2 x 10 l

Swing drive
2 x 5 l

Hydraulic tank
390 l

Environment

Noise levels comply with environmental regulations (dynamic values).

Noise level LwA
Guaranteed: 111 dB(A) (2000/14/EC)

Operator LpA
76.0 dB(A) (ISO 6396)

Weight

	Shoe width (mm)	Operating weight (t)		Ground pressure (kgf/cm ²)	
		DX480LCA-HD	DX520LCA-HD	DX480LCA-HD	DX520LCA-HD
Triple grouser	600 (std)	48.4	51.1	0.84	0.88
	750	49.4	52.1	0.68	0.72
	800	49.7	52.3	0.64	0.68
Double grouser	900	50.2	52.9	0.58	0.61
	600	48.4	51.1	0.84	0.88

Digging forces (ISO)

DX480LCA-HD		Boom: 7,100 mm Arm: 3,350 mm H CLASS Bucket: 2.07 m ³		Boom: 7,100 mm Arm: 2,900 mm H CLASS Bucket: 2.35 m ³		Boom: 7,100 mm Arm: 3,980 mm GP Bucket: 1.8 m ³	
		t	27.5/ 30.0	27.5/ 30.0	28.1/ 30.8		
BUCKET (Normal/Boost)	kN	269/ 294	269/ 294	276/ 302			
ARM (Normal/Boost)	t	20.7/ 22.6	23.5/ 25.7	18.6/ 20.3			
	kN	203/ 222	231/ 252	182/ 199			

DX520LCA-HD		Boom: 6,300 mm Arm: 2,900 mm H CLASS Bucket: 2.91 m ³		Boom: 6,300 mm Arm: 2,400 mm H CLASS Bucket: 3.28 m ³		Boom: 11,000 mm Arm: 8,000 mm GP Bucket: 0.92 m ³	
		t	27.5/ 30.0	27.5/ 30.0	13.8/ 15.2		
BUCKET (Normal/Boost)	kN	269/ 294	269/ 294	135/ 149			
ARM (Normal/Boost)	t	23.5/ 25.7	27.3/ 29.9	10.9/ 11.9			
	kN	231/ 252	268/ 293	107/ 117			

Swing Mechanism

- High-torque, axial piston motor with planetary reduction gear bathed in oil
- Swing circle is a single-row, shear type ball bearing with induction-hardened internal gear
- Internal gear and pinion immersed in lubricant
- Swing speed: 0 to 9.2 rpm
- Max. swing torque (Eff. = 0.77%): 20,130 (15,500) kgf/m

Drive

Each track is driven by an independent, high-torque axial piston motor through a planetary reduction gearbox. Two levers or foot pedals guarantee smooth travel with counter-rotation on demand.

Travel speed (low - high)
3.2 / 5.6 km/h

Maximum traction force
37.6 / 18.9 t (Eff. = 85 / 75%)

Maximum gradeability
35° (70%)

Technical specifications

Bucket

Bucket Type	Capacity (m ³)	DX480LCA-HD Wide 3.90 m - CW: 8.5 t			DX480LCA-HD Fixed 3.59 m - CW: 9.0 t				DX480LCA-HD Narrow 3.57 m - CW: 9.0 t				
		Width (mm)			Boom								
		SAE	With side cutters	W/O side cutters	Weight (kg)	7.1 m HD				7.1 m			
						3.35 m HD	3.98 m	3.35 m HD	3.98 m	3.35 m HD	3.98 m	3.35 m HD	3.98 m
GP	1.80	1,474	1,381	1,718	A	A	A	A	A	B	B	A	A
	2.14	1,682	1,588	1,910	A	A	A	A	C	C	B	B	
	2.39	1,837	1,744	2,027	B	B	A	B	D	D	C	C	
	2.86	2,130	2,037	2,279	D	D	C	C	X	X	D	D	
H CLASS	1.80	-	1,200	1,689	A	A	A	A	A	B	A	A	
	2.07	-	1,350	1,800	A	A	A	A	C	C	A	B	
	2.35	-	1,500	1,960	A	B	A	B	D	D	B	C	
	2.72	-	1,700	2,108	C	C	B	C	D	-	C	D	
2.91	-	1,800	2,232	D	D	C	C	-	-	D	D		
Maximum load pin-on(payload+bucket)				6,967	6,537	7,272	6,823	5,475	5,147	6,222	5,845		

Bucket Type	Capacity (m ³)	DX520LCA-HD Wide 3.90 m - CW: 11.1 t			DX520LCA-HD Fixed 3.59 m - CW: 11.1 t						DX520LCA-HD Narrow 3.57 m - CW: 11.1 t				
		Width (mm)			Boom										
		SAE	With side cutters	W/O side cutters	Weight (kg)	6.3m HD			6.3m HD			11.1m			
						2.4m HD	2.9m HD	8.0m	2.4m HD	2.9m HD	8.0m	2.4m HD	2.9m HD	8.0m	2.4m HD
DC	1.12	-	1,500	1,002	X	X	X	X	X	X	X	X	X	X	X
	1.37	-	1,800	1,117	X	X	X	X	X	X	X	X	X	X	X
	0.92	1,236	1,173	697	X	X	A	X	X	A	X	X	D	X	C
	1.80	1,474	1,381	1,718	A	A	X	A	A	X	A	A	X	A	A
GP	2.14	1,682	1,588	1,910	A	A	X	A	A	X	A	A	X	A	A
	2.39	1,837	1,744	2,027	A	A	X	A	A	X	A	A	X	A	A
	2.86	2,130	2,037	2,279	A	A	X	A	A	X	A	A	X	A	A
	1.80	-	1,200	1,689	A	A	-	A	A	-	A	A	-	A	A
H CLASS	2.07	-	1,350	1,800	A	A	-	A	A	-	A	A	-	A	A
	2.35	-	1,500	1,960	A	A	-	A	A	-	A	A	-	A	A
	2.72	-	1,700	2,108	A	A	-	A	A	-	A	A	-	A	A
	2.91	-	1,800	2,232	A	A	-	A	A	-	A	A	-	A	A
	3.28	-	2,000	2,380	B	B	-	B	B	-	B	B	-	B	B
Maximum load pin-on(payload+bucket)				11,237	10,490	2,764	11,621	10,852	2,923	8,875	8,287	1,889	9,882	9,228	2,121

A : Suitable for materials with density of 2100kg/m³ (3500lb/yard³) or less
 C : Suitable for materials with density of 1500kg/m³ (2500lb/yard³) or less
 Based on ISO 10567 and SAE J296, arm length without quick change clamp.

B : Suitable for materials with density of 1800kg/m³ (3000lb/yard³) or less
 D : Suitable for materials with density of 1200kg/m³ (2000lb/yard³) or less

X: Not recommended

This bucket recommendation is based on machine stability considering the tipping load with a certain density of handling material and should be strictly followed. It's more recommendable to use a smaller size of bucket than that recommended, in severe working conditions and applications to ensure extended durability.

Standard and optional equipment

Standard equipment

ENGINE

- DOOSAN DE12TIS Diesel engine combined with e-EPOS System, Direct injection, water-cooled, Tier I/Tier II compliant
- Auto-idle function

HYDRAULIC SYSTEM

- Boom and arm flow regeneration
- Swing anti-rebound valves
- Spare ports (valve)
- One-touch power boost function
- Breaker piping
- Cylinder cushioning & contamination seals
- Control of auxiliary hydraulic flow from the display panel

CAB & INTERIOR

- Sound-insulated and viscous support mounted cab
- Seat with adjustable headrest and armrest
- Roof window
- Air conditioning with climate control
- Pull-up type front window with sun roller blind and removable lower front window
- Sliding left front window
- Intermittent upper windshield wiper
- Automatic rear window defroster
- Adjustable PPC wrist control levers for arm, boom, bucket and swing and auxiliary hydraulic buttons
- Travel pedals and hand levers
- 7" (18 cm) LCD colour monitor panel
- Engine speed (RPM) control dial
- 3 operating modes & 3 working modes
- Seat belt
- Cigarette lighter and ashtray
- Ceiling light
- Cup holder
- Multiple storage compartments
- Tool storage area
- Hot and cool box
- Flat, spacious, easy-to-clean floor
- Master key
- Anti-theft protection
- Loudspeakers and connections for radio
- Remote radio audio control panel
- 12 V spare power socket
- Serial communication port for laptop PC interface
- MP3/USB radio with CD player

SAFETY

- Large handrails, steps and platform
- Parking brake and cab swing lock pin
- Punched metal anti-slip plates
- Hydraulic safety lock lever
- Safety glass
- Hammer for emergency escape
- Reinforced cast steel pivot points
- Lockable fuel cap and covers
- Battery cut-off switch
- Emergency engine stop and hydraulic pump control switches
- Engine overheat prevention system
- Engine restart prevention system
- Plastic roof cover
- Light rearview mirror

OTHER

- Boom DX480LCA-HD: 7.1 m HD – arm: 3.35 m HD / Boom DX520LCA-HD: 6.3m HD Boom – 2.4m/2.9m HD Arm
- Counterweight DX480LCA-HD: 8,500 kg / DX520LCA-HD: 11,100 kg
- Tropical area preparation
- Well protected and optimised layout of hydraulic, electric & lubrication routing
- Double element air cleaner and pre-filtered Turbo dust separator
- Fuel filter + fuel pre-filter with water separator sensor
- Fuel filling pump
- Dust screen for radiator/oil cooler
- Self-diagnostic function
- Work lights (2 front frame, 2 front cab-mounted, 2 boom-mounted and 1 rear side) with alternator (12 V, 50 A)
- Electric horn
- Hydrostatic 2-speed travel system with automatic shift
- Remote greasing for swing circle and workgroup pivot points
- Breaker piping & Filter
- HD under cover
- EM bush

UNDERCARRIAGE

- Variable undercarriage 3.34 m - 3.90 m (mechanically adjustable)
- Hydraulic adjuster for the track
- Full track guard
- Greased and sealed track links
- 600 mm triple grouser shoe

Optional equipment

CAB & INTERIOR • ROPS CABIN AIR • SUSPENSION SEAT

- Heated, adjustable air suspension seat with adjustable headrest and armrest
- Rain shield
- Joystick pattern change

SAFETY

- FOGS cab - top and front cab guards (ISO 10262)
- Front window upper and lower guards
- Boom and arm cylinder safety valves
- Overload warning device
- Rotating beacon or telescopic rotating beacon
- Rear view and side camera
- Travel and swing alarm
- Additional right rearview mirror

OTHER

- Arms DX480LCA-HD: 2.40 m HD, 2.90 HD or 3.98 m
- Arms DX520LCA-HD: 3.35 or 8.00 m SLR - boom: 11.00 m SLR
- Fuel heater
- Hydraulic piping for crusher, quick coupler, clamshell, tilting and rotating buckets
- Floating boom function
- Wiper for lower front window
- Double pump flow
- Oil-washed air cleaner
- Toolkit and spare parts for first service
- 6 additional work lights (2 front frame, 4 front cab-mounted, 2 rear cab-mounted, 2 boom-mounted and 1 rear side) with alternator (24 V, 80 A)
- Guards for work lights (boom)

UNDERCARRIAGE

- 600 mm double grouser shoe & 750, 800 & 900 mm triple grouser shoe
- Full length track guard



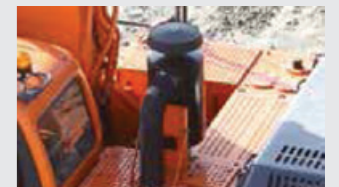
FULL LENGTH TRACK GUARD
For extra protection against track slippage.



FOGS CAB OR FRONT GUARDS
For extra safety in specific applications.



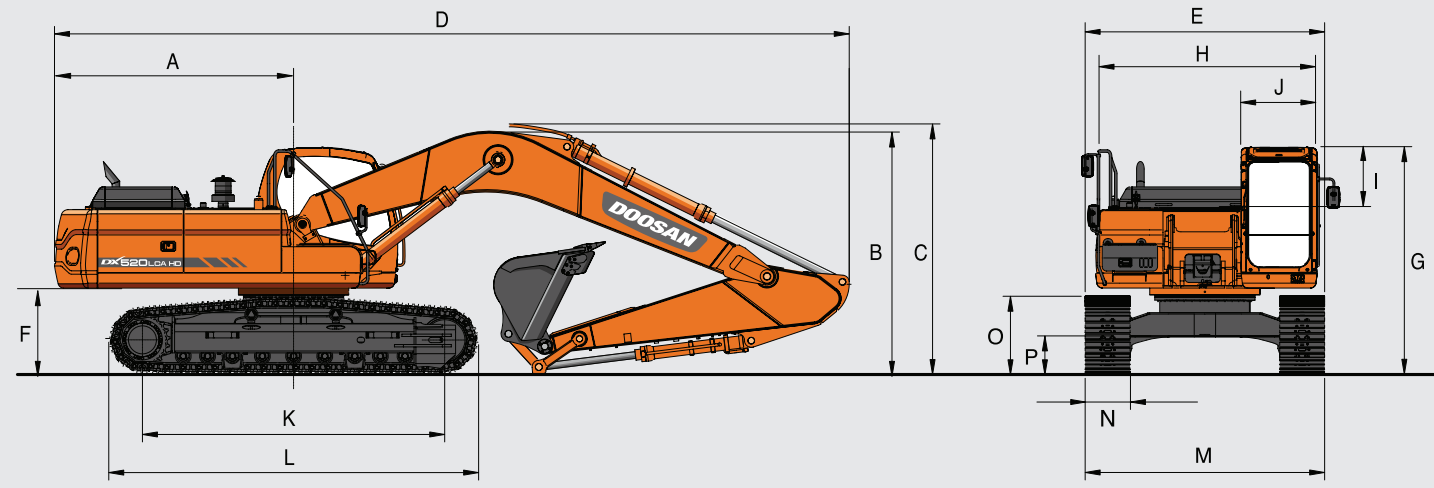
SUPER LONG REACH - SLR AND SEMI SLR
Our long reach machines are ideally suited for land and water based operations with a maximum reach of nearly 20 metres.



OIL-WASHED AIR CLEANER
Increases cleaning of the air intake in extra dusty areas such as quarries.

Some of these options may be standard in some markets. Some of these options may not be available for certain markets. Please check with your local DOOSAN dealer for more information about availability or to adapt your machine to your application needs.

Dimensions



Dimensions

	DX480LCA-HD				DX520LCA-HD			
	7,100	7,100	6,300	11,000	7,100	7,100	7,100	7,100
Boom length - mm	7,100	7,100	6,300	11,000	7,100	7,100	7,100	7,100
Arm length - mm	3,500	2,900	3,980	3,350	2,900	2,400	8,000	3,350
Bucket capacity - m ³	2.14	2.39	1.80	2.14	3.20	3.60	0.92	2.39
Undercarriage	Variable				Variable			
A. Tail swing radius - mm	3,700	3,700	3,700	3,700	3,700	3,700	3,700	3,700
B. Shipping height (boom) - mm	3,580	3,830	3,840	3,570	4,140	4,010	3,840	3,990
C. Shipping height (hose) - mm	3,730	3,980	3,990	3,720	4,200	4,100	4,070	4,125
D. Shipping length - mm	12,130	12,230	12,210	12,180	11,430	11,620	16,090	12,130
E. Shipping width (std) - mm	3,340	3,340	3,340	3,350	3,340	3,340	3,340	3,340
F. Counterweight clearance - mm	1,460	1,460	1,460	1,460	1,460	1,460	1,460	1,460
G. Height over cab - mm	3,350	3,350	3,350	3,350	3,350	3,350	3,350	3,350
H. House width - mm	2,990	2,990	2,990	2,990	2,990	2,990	2,990	2,990
I. Cab height above house - mm	845	845	845	845	845	845	845	845
J. Cab width - mm	1,010	1,010	1,010	1,010	1,010	1,010	1,010	1,010
K. Tumbler distance - mm	4,470	4,470	4,470	4,470	4,470	4,470	4,470	4,470
L. Track length - mm	5,465	5,465	5,465	5,465	5,465	5,465	5,465	5,465
M. Undercarriage width (std) - mm	3,340 / 3,900*	3,340 / 3,900*	3,340 / 3,900*	3,340 / 3,900*	3,340 / 3,900*	3,340 / 3,900*	3,340 / 3,900*	3,340 / 3,900*
N. Shoe width - mm	600	600	600	600	600	600	600	600
O. Track height - mm	1,210	1,210	1,210	1,210	1,210	1,210	1,210	1,210
P. Ground clearance - mm	770	770	770	770	770	770	770	770

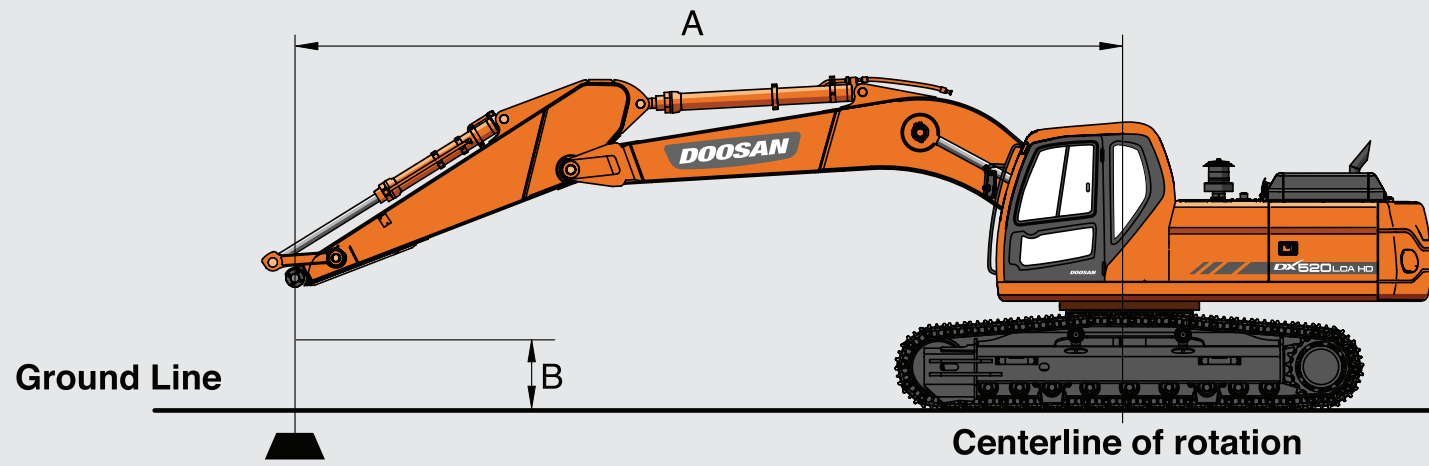
(*) Retracted / Extended

Component weights

Item	unit	DX480LCA-HD	DX520LCA-HD	Remarks
Upper structure without front	kg	18,300	20,900	with counterweight
Counterweight	kg	8,500	11,100	
Lower structure assembly	kg	19,300	19,300	
Front assembly	kg	10,500	10,800	based on standard *
Boom 6,300 mm	kg	3,470	3,470	
Boom 7,100 mm	kg	3,825	3,825	
Boom 11,000 mm	kg	-	4,500	SLR
Arm 2,400 mm	kg	1,530	1,530	
Arm 2,900 mm	kg	1,600	1,600	including bushing
Arm 3,350 mm	kg	1,830	1,830	
Arm 3,980 mm	kg	1,850	-	SLR
Arm 8,000 mm	kg	-	2,460	
Bucket	kg	1,935 (2.14 m ³ GP)	2,590 (3.20 m ³ HD)	
Boom cylinder (each)	kg	400	400	
Arm cylinder	kg	610	610	
Bucket cylinder	kg	370	370	150 kg for DX520LCA-HD 8.0 m arm

(*) : DX480LCA-HD Std front – 7.1 m Boom, 3.35 m Arm, 2.14 m³ GP Bucket.
DX520LCA-HD Std front – 6.3 m Boom, 2.90 m Arm, 3.20 m³ HD Bucket.

Lifting capacities



DX480LCA-HD – Standard configuration

Standard track: 3,900 mm - HD Boom: 7,100 mm - HD Arm: 3,350 mm - Without bucket - Shoe: 600 mm - Counterweight: 8,500 kg Units: 1,000 kg

A(m)	3	4-5	6	7-5	9	Max. Reach	A(m)
B(m)							
9.0				10.83*	10.83*	8.47*	7.89
7.5				10.81*	10.81*	8.03*	8.94
6.0				11.49*	11.49*	7.90*	9.65
4.5		20.23*	20.23*	15.08*	12.54*	12.21*	10.09
3.0		21.91*	21.91*	17.18*	11.2	13.68*	10.68*
1.5		17.00*	17.00*	18.65*	10.96	14.48	10.22
o(Ground)		21.26*	21.26*	19.19*	10.77	14.15	9.92
-1.5	17.07*	17.07*	24.59*	21.63	18.78*	10.72	9.8
-3.0	26.20*	26.20*	22.23*	21.9	17.36*	13.69*	9.86
-4.5	23.09*	23.09*	18.42*	18.42*	14.51*	14.03	10.68*

Option 1

Standard track: 3,900 mm - HD Boom: 7,100 mm - HD Arm: 3,980 mm - Without bucket - Shoe: 600 mm DG - Counterweight: 8,500 kg Units: 1,000 kg

A(m)	1.5	3	4-5	6	7-5	9	10.5	Max. lift	A(m)
B(m)									
9.0								7.16*	7.16*
7.5								6.85*	6.85*
6.0								6.77*	6.77*
4.5								9.76*	8.99
3.0								10.78*	10.78*
1.5								10.04*	8.84
o(Ground)								14.10*	14.10*
-1.5	13.14*	13.14*	16.76*	16.76*	25.63*	21.66	19.16*	13.68	14.09
-3.0	19.05*	19.05	23.78*	23.78*	23.79*	21.82	18.20*	13.68	14.07
-4.5			27.31*	27.31*	20.61*	20.61*	16.03*	13.92	12.43*
-6.0					15.32*	15.32*	11.67*	11.67*	10.6

1. The nominal forces are based on the SAE J1097 standard.
2. The load point is the hook at the rear of the bucket.
3. * = The nominal loads are based on hydraulic capacity.

4. The nominal loads shown do not exceed 75% of tipping loads or 87% of hydraulic lifting capacity.
5. For lifting capacity with bucket, simply subtract actual weight of the bucket from the values.
6. The configurations indicated do not necessarily reflect the standard equipment of the machine.

: Nominal force

: Nominal force at the side or 360°

DX520LCA-HD – Standard configuration

Standard track: 3,900 mm - HD Boom: 6,300 mm - HD Arm: 2,900 mm - Without bucket - Shoe: 600 mm - Counterweight: 11,100 kg Units: 1,000 kg

A(m)	3	4-5	6	7-5	Max. lift	A(m)
B(m)						
7.5					12.57*	12.57*
6.0					12.40*	11.65
4.5					12.70*	10.4
3.0					12.89*	9.81
1.5					12.12	9.7
o(Ground)					13.48*	10.06
-1.5	25.15*	25.15*	27.18*	26.21*	20.10*	16.73
-3.0	29.17*	29.17*	22.35*	22.35*	17.12*	16.81

Option 1

Standard track: 3,900 mm - HD Boom: 6,300 mm - HD Arm: 2,400 mm - Without bucket - Shoe: 600 mm - Counterweight: 11,100 kg Units: 1,000 kg

A(m)	3	4-5	6	7-5	Max. lift	A(m)
B(m)						
7.5					13.94*	13.94*
6.0					13.62*	12.67
4.5					13.60*	11.19
3.0					13.73*	10.51
1.5					13.96*	10.4
o(Ground)					14.20*	10.86
-1.5					18.90*	16.68
-3.0	25.43*	25.43*	20.61*	20.61*	15.81*	15.81*

Option SLR

Standard track: 3,900 mm - Boom: 11,000 mm - Arm: 8,000 mm - Without bucket - Shoe: 600 mm - Counterweight: 11,100 kg Units: 1,000 kg

A(m)	1.5	3	4-5	6	7-5	9	10.5	12	13.5	15	16.5	18	Max. lift	A(m)
B(m)														
12													3.21*	3.21*
10.5													3.92*	3.92*
9													3.99*	3.99*
7.5													4.12*	4.12*
6													4.02*	3.54
4.5													4.53*	4.53*
3.0													4.30*	4.23
1.5													4.13*	3.44
o													4.83*	4.83*
-1.5	6.26*	6.26*	6.91*	6.91*	9.21*	9.21*	13.88*	12.56	11.89*	9.23	9.53*	7.21	7.94*	5.82
-3	7.68*	7.68*	8.46*	8.46*	10.53*	10.53*	14.59*	12.24	12.25*	8.89	9.88*	6.91	8.17	5.58
-4.5	9.15*	9.15*	10.08*	10.08*	12.13*	12.13*	15.74*	12.14	12.34*	8.72	9.99	6.73	8.01	5.42
-6	10.70*	10.70*	11.81*	11.81*	13.99*	13.99*	15.35*	12.19	12.18*	8.69	9.92	6.67	7.93	5.35
-7.5	12.37*	12.37*	13.71*	13.71*	16.13*	16.13*	14.65*	12.37	11.76*	8.77	9.71*	6.7	7.95	5.36
-9	14.19*	14.19*	15.84*	15.84*	17.47*	17.47*	13.61*	12.67	11.04*	8.96	9.17*	6.83	7.73*	5.47
-10.5	16.22*	16.22*	18.29*	18.29*	15.32*	15.32*	12.13*	12.13*	9.94*	9.26	8.28*	7.06	6.93*	5.67
-12													5.53*	5.53*
-13.5													5.68*	5.68*

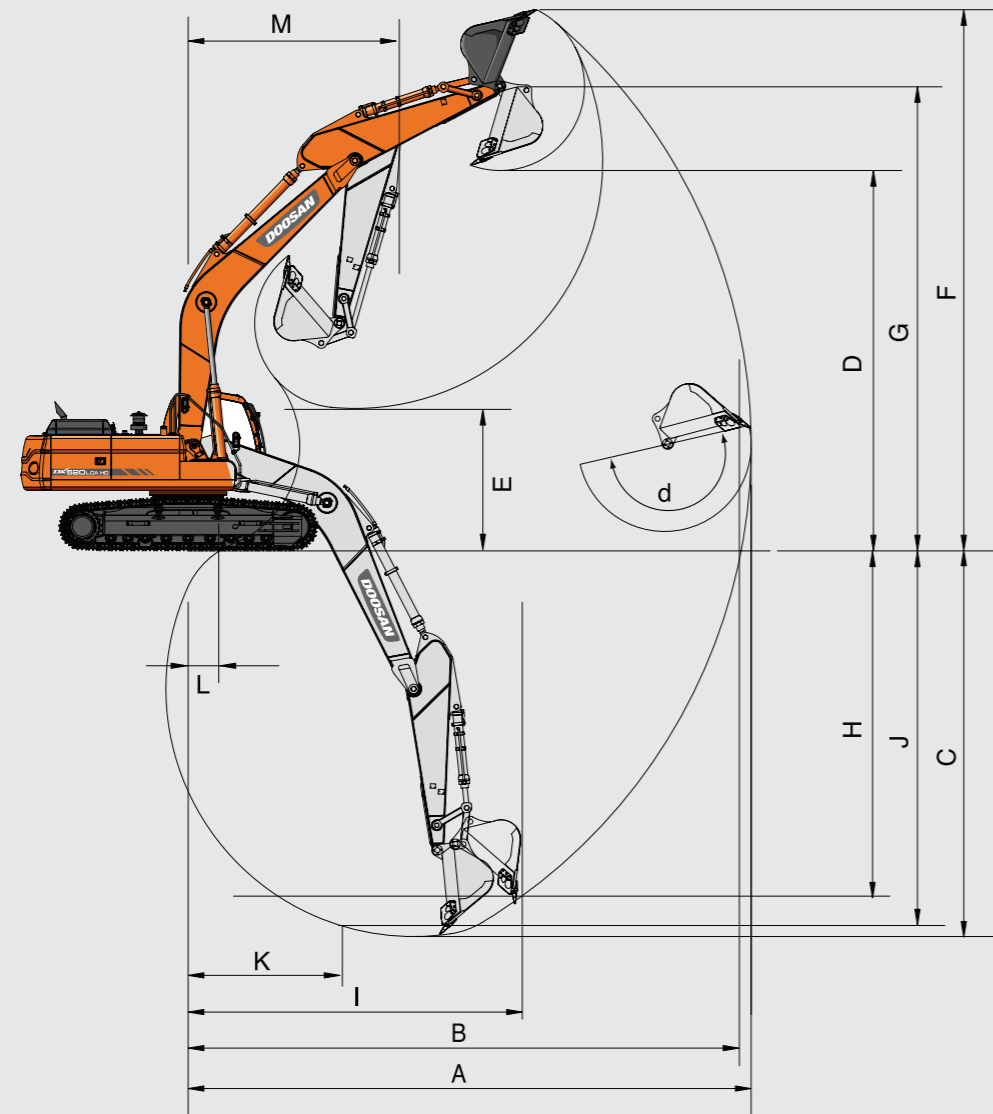
1. The nominal forces are based on the SAE J1097 standard.
2. The load point is the hook at the rear of the bucket.
3. * = The nominal loads are based on hydraulic capacity.

4. The nominal loads shown do not exceed 75% of tipping loads or 87% of hydraulic lifting capacity.
5. For lifting capacity with bucket, simply subtract actual weight of the bucket from the values.
6. The configurations indicated do not necessarily reflect the standard equipment of the machine.

: Nominal force

: Nominal force at the side or 360°

Working range



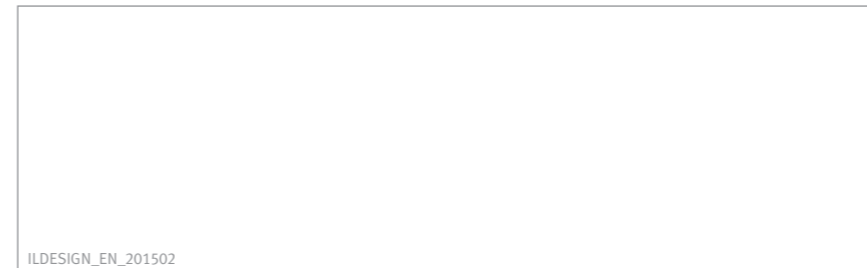
Working range

	DX480LCA-HD				DX520LCA-HD				
	7,100		6,300		6,300		11,000		7,100
Boom length - mm									
Arm length - mm	3,350	2,900	3,980	3,350	2,900	2,900	2,400	8,000	3,350
Bucket capacity - m ³	2.14	2.39	1.80	1.71	2.86	3.20	3.60	0.92	2.39
Undercarriage	Variable				Variable				
A. Max. digging reach - mm	12,120	11,720	12,670	12,150	10,770	10,750	10,330	19,610	12,120
B. Max. digging reach at ground level - mm	11,870	11,460	12,430	11,900	10,480	10,460	10,030	19,460	11,870
C. Max. digging depth - mm	7,810	7,360	8,440	7,850	6,810	6,770	6,270	15,130	7,810
D. Max. dumping height - mm	7,880	7,730	8,040	7,850	6,595	6,720	6,620	11,950	7,880
E. Min. dumping height - mm	3,125	3,580	2,500	3,110	2,930	2,950	3,470	1,980	3,125
F. Max. digging height - mm	11,080	10,940	11,230	10,930	9,720	9,600	9,460	14,520	11,080
G. Max. bucket pin height - mm	9,705	9,560	9,850	9,720	8,520	8,520	8,402	10,735	9,705
H. Max. vertical wall depth - mm	4,410	4,080	4,964	5,310	2,920	1,190	590	12,840	4,410
I. Max. radius vertical - mm	9,970	9,705	10,235	9,319	9,310	10,100	9,840	9,730	9,970
J. Max. digging depth(8' level) - mm	7,675	7,200	8,320	7,700	6,610	6,590	6,070	15,020	7,675
k. Min. radius 8' line - mm	2,950	3,935	3,935	3,935	3,230	3,215	3,230	4,930	3,950
L. Min. digging reach - mm	880	2,050	80	820	1,140	1,240	2,060	270	880
M. Min. swing radius - mm	5,170	5,190	5,140	5,170	4,750	4,750	4,780	6,210	5,170
d. Bucket angle - deg.	174	174	174	174	176	174	176	178	174



Doosan worldwide factories

- Heavy Equipment Factory
- Compact Equipment Factory
- Attachment Factory



Doosan Infracore Korea Office (HQ)
27/F, Doosan Tower 18-12, Euljiro-6Ga, Jung-Gu
Seoul 100-730 Korea
Tel : 82 2 3398 8114

www.doosaninfracore.com/ce/

ILDESIGN_EN_201502

Materials and Specifications in the catalogue are subject to change without notice.